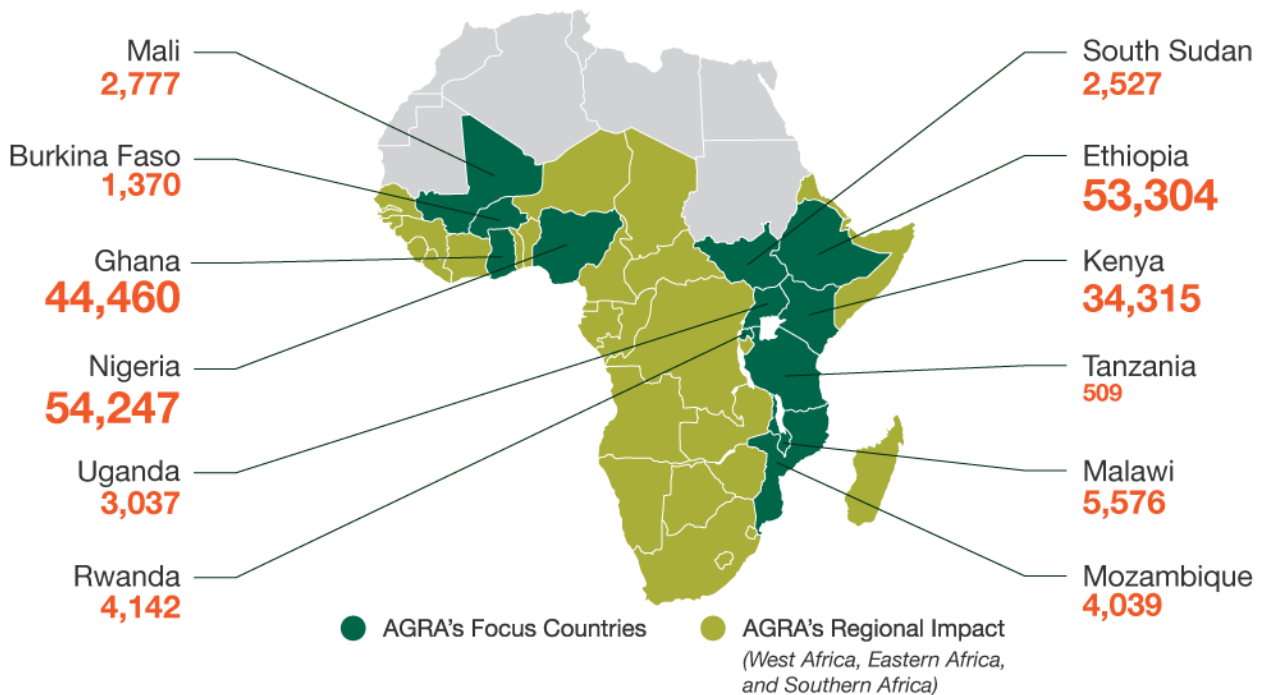


COVID-19 Situation Report #9


September 4, 2020

- Reports of COVID-19 cases continue to increase – albeit more slowly than we have seen recently - in AGRA focus (1) countries as governments continue to cautiously open economies. As of September 1, in AGRA focus countries, the rate of COVID-19 fatalities stood at 2% with a 66% recovery rate.
- Knock on effects from the COVID-19 pandemic are reversing decades of progress in Africa on poverty, healthcare and education and worsening food insecurity around the world. The New York Times ran an [article](#) noting the COVID-19 pandemic “has reinforced basic economic inequalities, none more defining than access to food.”
 - In Ethiopia and Burkina Faso, FEWSNET and the FAO have noted that COVID-19 has made a deteriorating food security situation worse, and is pushing people into severe food crisis and acute food insecurity.
- Easing of movement restrictions is making it easier for AGRA teams to implement programs and much programmatic work is proceeding as planned, following an initial restructuring of grants. We highlight AGRA’s response to the COVID-19 crisis.
- [AGRF Virtual Summit 2020 “Feed the Cities, Grow the Continent”](#) took place September 8-11. More than 10,000 delegates attended the event which was held in a hybrid format with most delegates attending online. More information [here](#).

COVID-19 cases continue to climb in AGRA focus (1) countries albeit more slowly than we’ve seen recently



In AGRA focus countries as of September 1, 2020, the number of COVID-19 cases has risen to over 210,000 cases from approximately 139,000 cases two weeks ago. In [Ethiopia](#) for example, over 53,000 cases of COVID-19 have been reported.



In Uganda, cases of COVID-19 have roughly doubled over the past few weeks, climbing from 1,560 on August 17, to 3,037 on 1 September. This has attracted concern from the president and the country's leadership. The idea of a second total lockdown is being discussed but is facing opposition mostly from the business community. The Standard Operation Procedures of COVID-19 control are now being enforced strongly and the government is watching the situation closely.

Governments cautiously open economies, despite rising case numbers of COVID-19

Across Africa, as people continue to suffer from the economic knock-on effects of the pandemic, governments are cautiously opening economies. We look at the situation in Uganda and Ghana, and focus on Mali, where there is persistent insecurity in the central and northern areas of the country.

In Uganda, the government is rolling out an e-voucher system to more districts to enable farmers access agricultural inputs at only 33% of the actual cost. The [Uganda Revenue Authority has rolled out a number of tax incentives](#) aimed at supporting the agricultural sector in terms of importation of inputs and agricultural machinery as well as those encouraging agricultural exports

In Ghana, the Executive Director of the National Board for Small Scale Industries (NBSSI), Mrs Kosi Yankey-Ayeh, announced that 120,000 businesses in Ghana have so far received the government's stimulus package. This is the result of government measures to ease the economic pressure on Ghanaian businesses posed by COVID-19, where the government earmarked a GH¢600 million (approx. \$120M at the time) stimulus package to be distributed among small and medium scale enterprises. We have seen this play out on the ground, where fifteen rice millers have benefitted from approximately \$11M from the government stimulus package.

Persistent insecurity and the uncertain political situation in Mali has made an already difficult time due to COVID-19 even more challenging. Public services, government institutions, banks and financial institutions were closed in Bamako for several weeks in August. Recognizing the fragile situation and to mitigate the negative impact of COVID-19, in mid-August, the United States Agency for International Development (USAID) awarded a grant of US\$ 4 million (over two billion FCFA) to the World Food Program (WFP) in Mali. The grant agreement will provide food aid to more than 196,000 food insecure Malians in the regions of Kayes, Ségou, Mopti, Tombouctou, Taoudéni, Kidal, Ménaka, Gao and the district of Bamako. AGRA staff continue to monitor the situation in Mali closely.

As knock on effects from the COVID-19 pandemic hit economies hard, discussion has increased around hunger

A New York Times article published on September 11 noted that "As the global economy absorbs the most punishing reversal of fortunes since the Great Depression, hunger is on the rise. Those confronting potentially life-threatening levels of so-called food insecurity in the developing world are expected to nearly double this year to 265 million, according to the United Nations World Food Program".

In Ethiopia and in Burkina Faso, there are reports of an unfolding food crisis, set against stable situations in food markets in Kenya and Mali, and a good harvest in Malawi

In Ethiopia, AGRA is hearing reports of humanitarian assistance needs increasing as a result of COVID-19, the impact of the desert locust infestation, floods and the long-term deterioration in macroeconomic conditions in Ethiopia. FEWSNET, for example, reports that food security across the eastern Horn of Africa is likely to deteriorate in late 2020, driven by below-average rainfall from October to December. This will exacerbate an already fragile situation with food assistance needs across the region already high. A World Bank Household COVID-19 monitoring survey, published in

June 2020, noted the potential impacts of the COVID-19 pandemic in Ethiopia are expected to be severe on households' welfare.

In Mali despite the uncertain security situation reported above, the supply of food markets remains sufficient across the country despite the disruption of flows linked to the persistence of insecurity in the central and northern areas of the country. Cereal prices are similar or below the five-year average, as well as increasing goat / cereal terms of trade, are favorable to average household access to food¹.

In Malawi, while the main source of food at the household level remains own food production, this has been on a steady decline over the past weeks with more households turning to the markets (purchasing) as the main source of food. Though figures are not yet out, the Ministry of Agriculture and Food Security (MoAFS) projects that Malawi has produced over 3.7 million MT of maize, an increase of 11.5% above last year, and 28% above the five-year average.

In Burkina Faso, the food insecurity situation continues to deteriorate. The latest analysis of the *Cadre Harmonisé*² indicates an increase in acute food insecurity of more than 50% since the last assessment of the situation in March. The crisis has been exacerbated by the impact of COVID-19 on the ability of populations to earn money to cover their daily needs - in a country where conflict and climate change already have led to food insecurity in some parts of Burkina Faso. Citing new data, the FAO and WFP expect some 3.3 million people to face acute food insecurity during the current lean season, which precedes the September harvest.

"The COVID-19 pandemic is worsening a situation that was already deteriorating at an alarming rate, pushing more and more people into severe food crisis and acute food insecurity," said Dauda Sau, FAO representative in Burkina Faso.

In Kenya, the AGRA War Room team reports that 98% of food markets (119 out of 122) in 35 sampled counties are operational, and a wide range of food commodities in local markets has kept the food situation stable. People are mostly adhering to Ministry of Health guidelines in sampled markets. Safety measures are in place in all markets, including hand washing facilities at the entrance and wearing masks by operators and customers. Some traders have put social distancing signage. We also note that in Kenya the number of people gathering has been increased from 15 persons to 100. This has allowed the resumption of field meetings for AGRA staff.

¹ *Assessing and monitoring the value of assets against what they can purchase in the market is an important component of food security analysis. On its own, the price of an asset is just a number. For example, the price of a goat is currently worth 15,000 CFAF at the Abalak market in Niger. Someone unfamiliar with Abalak would wonder: is this expensive for the local population? Only when an asset is viewed in relation to other goods, services or household income, does it become possible to assess the asset's exchange value, and it is the exchange value of the asset that affects the purchasing power and food access of the owner of the asset.*

² *To national and regional food crisis prevention and management systems, the [Cadre Harmonisé](#) (CH) is a comprehensive analytical framework that takes into account various indicators of food and nutrition security outcomes and the inference of contributing factors.*

AGRA's Response to COVID-19

Our response to COVID-19

In 2020, AGRA has focused on three main focus areas:

1. **Prevent a health crisis from becoming a continent-wide food crisis:**
 - a. We targeted farmers directly with our partners, to make sure they had access to inputs through working supply chains, or helping access finance.
 - b. We tracked availability and access to food across the continent, flagging hotspots and proposing solutions.
 - c. We advocated with governments to consider agriculture is included in the essential economic activity so that disruption to input supply is minimal. Almost all countries allowed the trading and movement of agricultural commodities with the countries and some between countries
 - d. We helped governments coordinate their response, aligning donor resources, adopting the right policies.
 - e. We helped avoid and resolve trade issues, to ensure food could flow from surplus areas to those who needed it.
 - f. We communicate events on the ground so that partners and other institutions make the right response in support of governments and communities in our focus countries. (Sit Rep and Food Monitor)
 - g. Where needed, we have provided quick financial support for the coordination of government task force. (Tanzania, Kenya)
 - h. We supported all our partners to amend their program implementation quickly respond to situation on the ground so that farmers continue receiving the support they need.
2. **Advocacy for placing agriculture at the center of national economic and social recovery:** Economic policy research and actions focused on “building back better” presents an opportunity to place agriculture at the heart of government’s economic planning. Managing the consequences of the shock to the economy and ensuring the smooth functioning of the food system will have hugely positive knock on effects across the economic and social recovery.
3. **Strengthen resilience across agri-food systems:** The sustainability and resilience of agrifood systems are generally considered are crucial for the continent and its development. We have realized we must unify diverse actors and institutions involved in agriculture and food, and the diverse relations between agriculture, food and the environment that can contribute to the development of more resilient pathways.

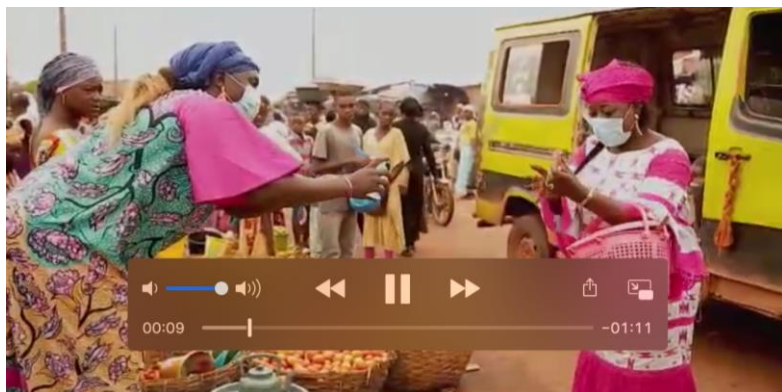
In many AGRA focus countries, the easing of COVID-19 measures are making it easier for teams to implement programs – albeit in a cautious fashion and respecting government protocols to limit the spread of COVID-19. We highlight AGRA’s work to support Kenya’s “War Room” and follow with examples of AGRA’s work in a few focus countries.



In Kenya, the Food Security War Room continues to support government efforts on data collection to ensure food security. *John Macharia, AGRA's Country Manager for Kenya participated in a virtual COVID Conference hosted by HE Uhuru Kenyatta and the Chair of the Council of Governors on September 1. At the meeting, HE Uhuru Kenyatta noted the role that the Ministry of Agriculture's War Room, which AGRA has supported, has played to help coordinate activities of national, county, private sector and development partners to ensure food security in Kenya.*

Despite COVID-19, the planting season is underway in most AGRA focus countries. In many countries, easing of containment activities means that it is easier for AGRA grantees to implement programs on-the-ground to support farmers.

- In Nigeria, The phased approach to easing the restrictions is making it easier to implement programs, and AGRA is aligning to government guidelines on COVID -19 to implement programs as planned. The community based advisors (CBAs) approach is working well in providing education/sensitization, and to promote extension delivery and increase farmers reach even in the face of COVID-19.
- In Malawi, AGRA is working in collaboration with Michigan State University to undertake a rapid assessment focused on impact of COVID-19 on food trade as supported under our Regional Food Trade program.



In Mali, at the request of the Malian, government, AGRA provided funding for a sketch series to encourage behavior change and raise awareness around protective actions against COVID-19. The first sketch was produced in early August in a local fruit and vegetable market in Bamako and was broadcast in early September on national TV in local language (Bambanan kan).

- Fertilizer donated by YARA is already reaching smallholder farmers at the county level; mini launches have been held with Governors in 4 counties. This is part of YARA's Action Africa: Thriving Farms, Thriving Future program which is reaching farmers in seven African countries. In Kenya YARA has proposed a donation of 13,000 MT aimed at aimed at enhancing maize production during the 2020 August – October season across potential regions that will boost maize supply in the country to cushion the country against the disruptive effects of COVID on the country's food security.

Related COVID-19 News

- [Dr. Agnes Kalibata: “I don’t understand why Africa is still hungry’: UN envoy’s plan to transform food systems for all](#)
- [Lessons for agriculture from Covid-19: local is best](#) [from Nigeria]
- [Covid-19 accelerates digital transformation of African agriculture value chains](#) [from Kenya]
- [Agricultural technologies, innovations key for agri-business resilience during COVID-19](#)

About the Sitrep

As COVID-19 continues to spread across Africa, our bi-weekly sitrep is designed to provide timely information, reflecting what we hear from small holder farmers and partners on-the-ground in 11 countries in sub-Saharan Africa (1). We welcome your feedback at sitreps@agra.org.

- (1) Ghana, Rwanda, Nigeria, Uganda, Burkina Faso, Mali, Kenya, Ethiopia, Mozambique, Malawi, Tanzania

COVID-19 situation and response at a glance by country (selected highlights only, updated as of September 1, 2020)

Country + summary of current situation	COVID19 challenges	Government ask/response	AGRA activities (highlights only)
<p>Burkina Faso. Most COVID-19 measures are suspended including curfews. However, gatherings of more than 50 still prohibited. Air borders are open from August 1 for travelers who meet the health and sanitary conditions</p> <p>An evaluation by the Food Situation Forecast Committee (CPSA) July 2020 shows that around 3,280,800 people are food insecure and in need of immediate humanitarian assistance, about 15% of the total population. This situation is up approximately 57% compared to the situation forecasted in March 2020.</p>	<p>Social distancing limit exchanges with stakeholders</p> <p>An anticipated potential risk for this campaign remains erratic rainfall which may negatively impact productivity.</p>	<p>To meet humanitarian needs in Burkina Faso, the World Food Program (WFP) has received a contribution from France of approximately CFA Franc 1.7 billion. 20% of this funding will go to the United Nations Humanitarian Air Service. 80% will be used to acquire food; 75,371 internally displaced people and members of host families will benefit from food assistance for three months. The announcement was made on Wednesday, July 15, 2020, during a press conference jointly hosted by the French Embassy and the WFP.</p>	<p>Ongoing follow up on campaign activities. The sowing performance rate is between 75% and 100% for cereals in most regions and the weeding performance rate is between 50% and 75%.</p> <p>With restrictions lifted, the country program officers have been carrying out field monitoring missions across the different consortia</p>
<p>Ethiopia. Movement restriction has been eased by regional government.</p> <p>Ethiopian government declared the number of food insecure people has reached 16.5 million (6.7 million non COVID-19 and 9.8 million COVID-19 related). Of those that require assistance, 61% of are children, 21% women and 9% people with disabilities.</p> <p>Food security across the eastern Horn of Africa is likely to deteriorate in late 2020, driven by below-average rainfall from October to December. Food assistance needs across the region are already high, due to recurrent climatic</p>	<p>No update</p>	<p>On July 4, 2020, a Grant Agreement amounting to \$65.69 MM was signed virtually between the Federal Democratic Republic of Ethiopia and the African Development Bank to finance the COVID-19 Emergency Crisis Response Budget Support Program. The Export Import Bank of Korea is a co-financer with an allocation of \$40MM in the form of credit.</p> <p>A Concessional Loan Agreement amounting to \$30MM was signed between the Federal Democratic</p>	<p>AGRA country team working with grantees in preparation for planting season.</p> <p>Some of the activities include:</p> <ul style="list-style-type: none"> • On-going support in planting of Teff • Supporting agro dealers in obtaining competency certificate to

Country + summary of current situation	COVID19 challenges	Government ask/response	AGRA activities (highlights only)
<p>shocks since 2016, the economic impact of COVID-19, and the desert locust upsurge, as well as long-term deterioration in macroeconomic conditions in Ethiopia. (FEWSNET)</p>		<p>Republic of Ethiopia and the Government of the Republic of Korea to finance the provision of medical equipment in response to the COVID-19 pandemic.</p> <p>The Ministry of Agriculture is working hard to put additional land under cultivation to compensate for expected production loss due to COVID-19.</p> <p>The government has dropped taxes, tariffs on all edible oil products, bread wheat, rice, packed children food and sugar to stabilize the market and minimize economic effects of COVID-19.</p>	<p>venture into business</p> <ul style="list-style-type: none"> Supporting the readiness of Farmer Training Centers including equipping with digital soft technologies etc.
<p>Ghana. Ghana's borders remain closed to movement of people from neighboring countries. Military and other security officers have been detailed to the country's entry points to check the illegal movement of people across the borders.</p> <p>It is anticipated that Ghana's airports will open to international flights in September, 2020. As part of preparations in this regard, the Minister of Aviation has led a team of experts to assess the readiness of the Kotoka International Airport (KIA) to implement requisite COVID 19 safety protocols and guidelines amidst the movement of flights, people and cargo. The final</p>	<p>The easing of COVID-19 measures are making it easier for team to implement programs.</p> <p>Some farmers have complained of inadequate mechanization services due to scarcity of labor as a result of COVID19.</p>	<ul style="list-style-type: none"> Government has put together a COVID 19 Alleviation Program (CAP) Fund to mobilize public and private funds, PPEs and support to mitigate the effect of the pandemic. At the 2020 mid-year review of governments financial statement to Parliament, the Finance Minister requested a supplementary budget of GHC11Billion (@ \$2B) to support COVID-19 activities. The financing arrangements for Ghana's Agriculture 	<p>Taking advantage of the easing of COVID-19 Measures, AGRA programming is ongoing.</p> <p>Southern Region: Farmers received training on quality standards and are implementing these on their demonstration plots and farms. Demonstration plot activities are on-going and farmer field days are planned. Digital profiling of community-based advisors is also on-going.</p>

Country + summary of current situation	COVID19 challenges	Government ask/response	AGRA activities (highlights only)
<p>report will be presented to the President for the final decision and possible official announcement.</p> <p>In the 15th COVID 19 address to the nation, the President of Ghana announced the re-opening of schools for final year Junior High School (JHS) students. In addition to instructing the Ministry of Education (MOE) to put in place preventive and safety measures such as spraying of the schools and provision of COVID19 PPEs, Hand sanitizers, etc., the President also directed that all final year students and their teachers be provided with one hot meal a day to ensure that students remain in school and do effective learning.</p>		<p>Sector COVID-19 Response Strategy program is in two phases. Phase 1 is from July to December 2020 and Phase 2 January to December 2021. The total cost for Phase 1 is estimated at GHS 2.143 billion (approx. \$360M). Phase 2 cost is estimated at GHS 2.512 BN (approx.. \$425 M). Out of this, MOFA is seeking GHC1.88B approximately US\$340 M from the Ministry of Finance and the rest from other sources including development partners, financial institutions and private sector.</p> <ul style="list-style-type: none"> 131,000 businesses revealed they still had challenges accessing finance with over 60 per cent calling for subsidized interest rates. <p>The Executive Director of the National Board for Small Scale Industries (NBSSI), Mrs Kosi Yankey-Ayeh, announced that 120,000 businesses in the country have so far received the</p>	<p>Though some parts of the Southern zone experienced erratic rainfall , the season is generally good.</p> <p>Northern Region: Despite some long breaks of rainfall in many parts of Northern Ghana, crops especially those that were planted with the right varieties and at the recommended time are generally doing well.</p>

Country + summary of current situation	COVID19 challenges	Government ask/response	AGRA activities (highlights only)
		<p>government's stimulus package. It will be recalled that as part of measures to ease the economic pressure on Ghanaian businesses posed by Covid-19, the government earmarked a GH¢600 million (approx.. \$120M at the time) stimulus package to be distributed among small and medium scale enterprises. Through the Consortia work of AGRA, 15 Rice Millers have so far benefitted a total of approx. \$11M from the government stimulus package</p>	
<p>Mali. The curfew put in place following the socio-political crisis (Coup d'Etat/resignation of the President) was suspended to celebrate Achoura afterwards it will be applied from 1:30 am to 5:00 am</p>	<p>No new update on challenges.</p>	<p>The government is maintaining the fertilizer subsidy at 11,000CK /50kg to support farmers in the current planting season.</p> <p>On August 17, 2020, the United States Agency for International Development (USAID) awarded a grant of four million dollars (over two billion FCFA) to the World Food Program (WFP) in Mali to help mitigate the negative effects of Covid-19. The grant agreement will provide food aid to more than 196,000 food insecure Malians in the regions of Kayes, Ségou, Mopti,</p>	<p>Ongoing Campaign preparation activities: These include:</p> <ul style="list-style-type: none"> Support farmers to introduce new varieties Organizing direct sales with agro-dealers Facilitation of input credit financing Continued engagement with private seed companies

Country + summary of current situation	COVID19 challenges	Government ask/response	AGRA activities (highlights only)
		Tombouctou, Taoudéni, Kidal, Ménaka, Gao and the district of Bamako.	
<p>Kenya. The Nationwide Curfew remains in force for a further 30 days. It is expected to be lifted at the end of September 2020.</p> <p>The closing time for restaurants and eateries has been amended to 8pm for the next 30 days. This has a spiral effect on farm produce demand (transport and markets)</p> <p>Schools and other learning institutions remain closed. This is affecting demand for agriculture commodities.</p> <p>98% of food markets (119 out of 122) in 35 sampled counties are operational; wide food commodity range in local markets has kept the food situation stable.</p> <p>82% (44) of 55 livestock markets sampled in 16 counties are fully operational, with 7 operating partially in open air.</p> <p>Adherence to guidelines estimated at 80% in sampled markets. Safety measures in place in all markets including hand washing facilities at the</p>	<p>Number of people gathering has been increased from 15 persons to 100. This is a good development as it has allowed field meetings to go on.</p> <p>Various studies on the impact of COVID on SMEs report depressed demand, difficulty to pay salaries, Loan defaults and low cash flow positions.</p> <p>There is need for the speedy operationalization of the SME credit guarantee scheme by the Ministry of Finance.</p>	<p>Ministry of Agriculture continues to Coordinate effort to monitor food security through the AGRA-funded Food Security War Room.</p> <p>The President estimates that tax breaks provided as part of Kenya's COVID-19 response have put US\$ 470mn in the hands of citizens directly.</p>	<p>AGRA team is working closely with consultant to support the War Room.</p> <p>Government efforts to ease restrictions are helping in expediting program implementation.</p> <p>YARA Donated Fertilizer is already reaching smallholder farmers at the county level. Already mini launches with Governors have been organized in 4 counties.</p>

Country + summary of current situation	COVID19 challenges	Government ask/response	AGRA activities (highlights only)
<p>entrance and wearing masks by operators and customers. Some traders have put up price lists and social distancing signage.</p>			
<p>Nigeria Curfew of 10pm to 4am is still enforced. The Nigeria Centre for Disease Control (NCDC) begins on-site COVID-19 testing. The phased approach to easing the restrictions being implemented centrally and across States have resulted in a gradual return of economic activity, including the possibility of resuming international travel scheduled for 5th of September 2020. The Federal Airports Authority of Nigeria revenue dropped by 95% in the wake of lockdown declared to curtail further spread of COVID-19, commences a 100 % increase in Passenger Service Charge for domestic flight from September 1, 2020.</p>	<p>The phased approach to easing the restrictions is making it easier to implement programs, and AGRA is aligning to government guidelines on COVID -19 to implement programs as planned.</p> <p>Farmers mobilization and sensitization is slow due to restrictions on gathering</p> <p>Meetings are held in small number of farmers with COVID-19 guidelines in mind.</p>	<p>The Government of Nigeria launched the Agriculture Food and Job Plan (AFJP) in Funtua, Katsina State on the 23rd of July 2020 by the Hon. Minister of Agriculture Alh. Sabo Nanono. The <i>Agriculture for Food and Job Plan (AFJP)</i> is a component of the Nigeria Economic and Sustainability Plan (NESP). The Plan is to mitigate the impact of COVID-19 on farmers in particular, and the national economy in general.</p> <p>The project would mitigate the negative impact of COVID-19 on the economy and livelihoods of farmers by creating more access to food for and the rapid emergence of a competitive food production, processing and distribution in Nigeria.</p>	<p>Community Based Advisers (CBAs) approach work well in providing education/sensitization, promote extension delivery and increase farmers reach even in the face of COVID-19.</p> <p>Primary activity include:</p> <p>Kaduna State: Planting/Supply of input/Demo establishment</p> <p>Niger State Field Monitoring and supervision by Extension Agents/AGRA Team</p> <p>Introduction of vegetable seed from IITA into the consortium to improve farmers' resilience</p>

Country + summary of current situation	COVID19 challenges	Government ask/response	AGRA activities (highlights only)
<p>Rwanda. Travel across the country is open except two districts bordering Congo (Rusizi and Rubavu) [no new updates from July 23]</p>	<p>Cross border trading with neighbors is a challenge but it seems the government easing of COVID-19 measures is offering a return to some kind of normality.</p>	<p>No new updates.</p>	<p>AGRA team continues to support farmers through Q2 planned activities. Team plan to resume field visits while still observing government guidelines on health protection.</p>
<p>Uganda. The past two weeks saw the number of cases double from about 1,154 to 2,524. This upsurge has attracted lots of concern from the president and the entire country leadership. The idea of a second total lockdown is being discussed but is strongly facing opposition mostly from the business community</p> <ul style="list-style-type: none"> - Enforcement of the Standard Operation Procedures of COVID-19 control are now being enforced strongly 	<p>Low incomes of potential buyers hence downward pressure on commodity prices.</p>	<p>Planting season round the corner.</p> <p>Government rolling out the e-voucher system to more districts to enable farmers access agricultural inputs at only 33% of the actual cost</p> <p><u>Uganda Revenue Authority has rolled out a number of tax incentives</u> aimed at supporting the agricultural sector in terms of importation of inputs and agricultural machinery as well as those encouraging agricultural exports</p>	<p>Central, Eastern and Western Uganda are in harvesting season. North East will soon move into harvesting</p>

Country + summary of current situation	COVID19 challenges	Government ask/response	AGRA activities (highlights only)
<p>Malawi. On 27th August, 2020 the Minister of Education announced government decision to open schools on 7th September in a staggered manner commencing with students that are in the final grade and others will follow after 3 weeks based on how things turn out.</p>	<ul style="list-style-type: none"> Limited supervision on harvesting and handling of seed by out-growers. 	<p>Measures introduced on 27 August included:</p> <ul style="list-style-type: none"> Reduction of fuel prices to lower the transport costs Application of tax waivers on the importation of essential goods for Corona Virus management Reserve Bank of Malawi to allow banks to offer a three-month moratorium on interest payments on loans to small- and medium-sized businesses The country's Competition and Fair-Trading Commission to put in place strict monitoring of price controls and punish anyone found increasing prices The government to increase loans under the Malawi Enterprise Development Fund that will help micro, small and medium scale businesses that have been seriously affected by COVID-19. 	<p>Main Activities:</p> <p>While the main source of food at the household level remain own production, this has been on a steady decline over the past weeks with more households turning to the markets (purchasing) as the main source of food.</p> <p>AGRA is working in collaboration with Michigan State University (MSU) to undertake a rapid assessment focused on impact of COVID-19 on food trade as supported under our Regional Food Trade program.</p>
<p>Tanzania.</p> <p>There is an observed relaxation with most closed businesses re-opening up</p> <p>All schools resumed from 29th June 2020</p>	<p>Restricted trucks movements to from Burundi, Rwanda and Uganda</p>	<p>Operationalization of third season concept</p> <p>Support to digitalization of agric. extension services</p> <p>Coordination of multiple COVID-19 impact study results</p>	<p>In the northern highlands:</p> <p>Organizing farmers' field days</p> <p>Following the establishment of the</p>

Country + summary of current situation	COVID19 challenges	Government ask/response	AGRA activities (highlights only)
<p>Ministry of Health issued operational manual for colleges and schools to happen without escalating the spread of virus</p> <p>Parties and recreational places now allowed to happen while observing preventive measures</p> <p>Government offices are still open</p> <p>Now we observe restrictions to enter some places if not wearing key PPEs like surgical masks</p> <p>Most if not all non-government institutions are either closed operations or working from home</p> <p>Farming is going on at different level as per agro-ecological zones in table 2 below</p> <p>Grain trade and other food produce trade both internal and international is highly encouraged by the government.</p> <p>Tanzania airspace is open and major international flights like KLM, Qatar Airways resumed flights to Dar es salaam and Kilimanjaro</p>			<p>protocol for potato crop management, the practical application/hand on use of the agro-chemicals followed in the farms of the farmers who were identified. The IP project staff, government extension officers and Corteva field staff are all involved in monitoring farmer's use of the agrochemicals.</p> <p>Strengthening engagement/collaboration with the respective LGAs to fast-track the distribution of the seeds.</p> <p>Preparation of the relevant training modules/materials for potato market associations as per the guidelines</p>
<p>Mozambique. The country remains in a State of Emergency. The Ministry of the Interior has waived the requirement for authorization from the Minister for any Mozambican national who wishes to enter or leave the country, for any</p>	<ul style="list-style-type: none"> As COVID-19 emerged after commitments made to supporting government in recovering efforts from Cyclone IDAI and Kenneth disasters, there are already signs of shortage of funds for further commitments. 	<p>Donors and financing agencies have so far disbursed \$448.54 million in response to the Mozambican government's request for \$700 million to meet the needs</p>	<ul style="list-style-type: none"> Post-harvest and marketing training still ongoing at reduced pace due to restrictions on convening numbers; and

Country + summary of current situation	COVID19 challenges	Government ask/response	AGRA activities (highlights only)
<p>foreign national who wishes to leave the country and for any foreign national who wishes to enter the country and is a holder of a valid Work Visa, valid Temporary Stay Visa or a valid DIRE. Nonetheless, some foreigners coming to Mozambique will still need to “request authorization to enter”.</p> <p>As part of adapting to the new normal, institutions of higher education have reopened, after they had shown the authorities that their water supply and sanitation systems are adequate to prevent the spread of the COVID-19.</p> <p>Issuing of official documents such as IDs, DIRE and temporary visas to foreigners have resumed.</p> <p>Increased participation in funeral services to 50 people, except in cases where the cause of death is COVID-19 (in which case only ten participants are allowed)</p> <p>Resumption of religious services (50 participants’ maximum).</p> <p>5.0 - 9.99 million considered as Acutely food insecure population in Mozambique, as per the Food Assistance Outlook Brief Tables, August 2020</p>	<ul style="list-style-type: none"> • Funds under IDAI and Kenneth were not fully disbursed when COVID-19 outbreak emerged. • The insurgence in Cabo Delgado causes more and more dislocated people (to neighboring provinces (Nampula and Zambezia), <p>Risk of COVID-19 spread and people in need for food increases as well.</p>	<p>arising from the COVID-19 pandemic.</p>	<ul style="list-style-type: none"> • Restrictions will likely affect and extend initial preparations for the upcoming planting season

Financial resources committed as of July 3, 2020. These are resources committed that AGRA is aware of; the table may be changed as updates occur and we are made aware of them.

	Total	World Bank	IMF	Donors	WFP	Govt	Local Private Sector	Other	Remarks
	\$MM	\$MM	\$MM	\$MM	\$MM	\$MM	\$MM	\$MM	
Ghana	1,345.5	100.0	1,000.0	125.0	0.5	120.0			"The Govt. has proposed \$390MM humanitarian budget Govt. \$120MM Stimulus Package for SMEs."
Mali	233.2	25.1	200.0	2.3			5.8		
Burkina Faso	200.8	148.0				50.0		2.8	Govt. \$50MM support to AG sector.
Nigeria	1,642.8	50.0		6.6		1,202.6	94.4	289.2	"Govt. \$1.2BN funding for mechanization in 632 local govts. CBN providing \$90.3MM economic stimulus for households and businesses"
Ethiopia	499.0	82.6	411.0	5.4					The Govt. has set up a \$1.3BN Budget to mitigate COVID-19.
Kenya	1,702.0	50.0	758.0	191.0		703.0			"EU = \$5MM, Other UN agencies = \$135M, RF = \$1MM GOK has set up \$100MM SME recovery budget and \$100MM cash transfer to vulnerable people GOvt. Economic stimulus package = \$503MM"
Uganda	581.5		491.5	75.0		15.0			US Govt. \$3.4MM, EU \$31.6MM to support Govt effort to tackle COVID-19. GOG has dedicated \$15MM for food relief and IFAD set up \$40MM rural poor stimulus fund envelope.
Tanzania	-								
Rwanda	4.0			4.0					US Embassy has donated to support Govt. effort.
Malawi	42.7					42.7			Govt allocated \$22MM to agriculture, \$14 for grain purchase.
Mozambique	686.0	217.0	337.0					132.0	"Govt. setup \$700MM budget to mitigate COVID 19 Impact Islamic development fund has 132M in project support in the IMF's Pro-Saúde health support Program."
Total	6,937.5	672.7	3,197.5	409.3	0.5	2,133.3	100.2	424.0	

New Updates:

- IFC announced a sum of \$50 million loan to Nigeria's first City Monument Bank (FCMB).
- The U.S. Agency for International Development (USAID) announced \$50 million to support Kenya's response and recovery efforts to meet the immediate and longer-term challenges that COVID-19 is posing.
- June 27th, the World Bank approved a \$117 million grant to support a government project on Urban Development and Decentralization.